

Gillette®

powered by

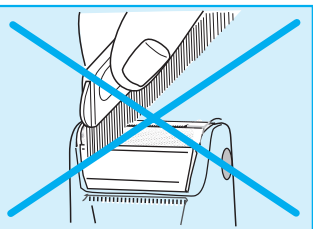
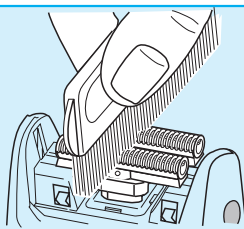
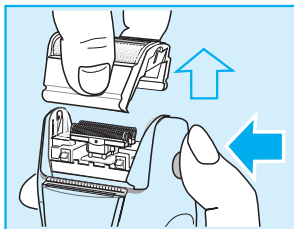
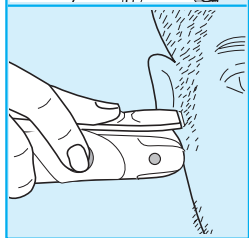
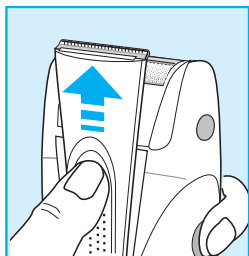
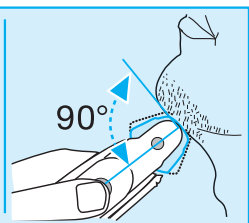
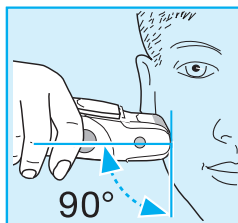
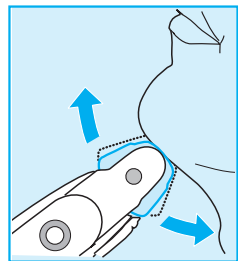
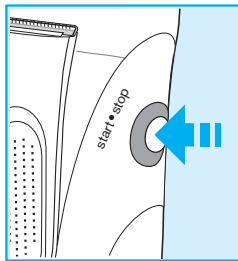
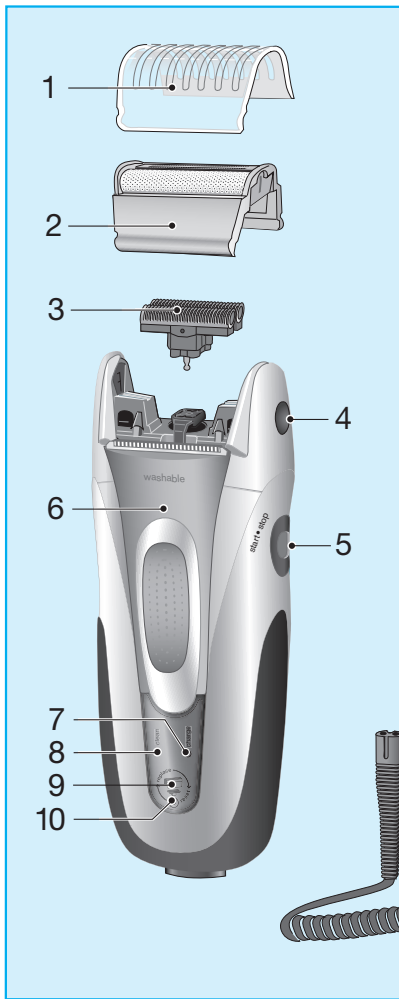
BRAUN

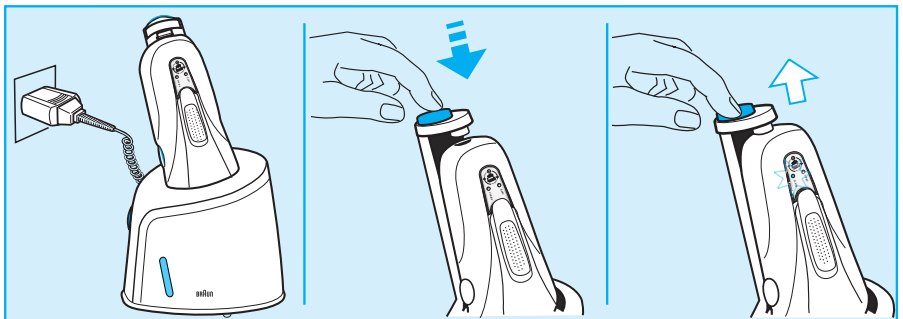
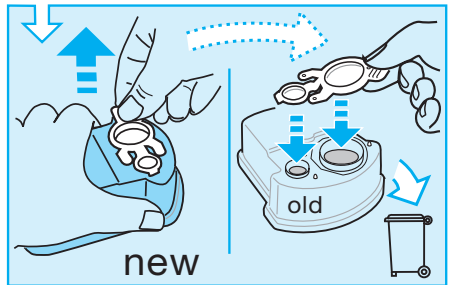
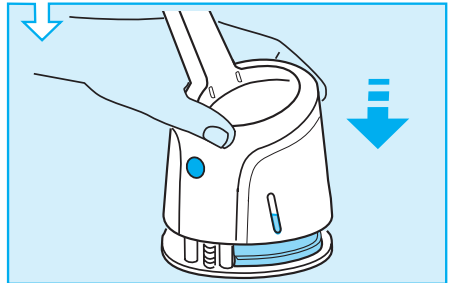
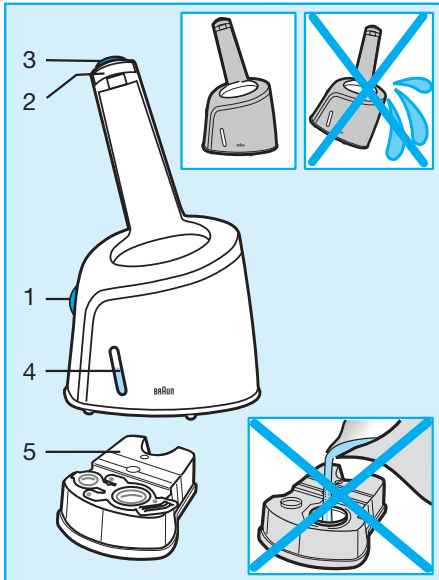
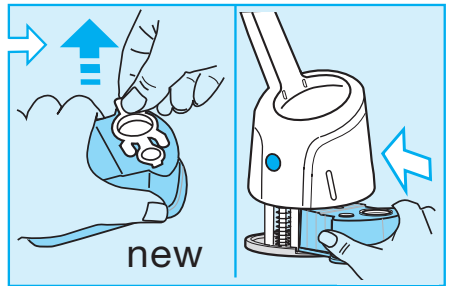
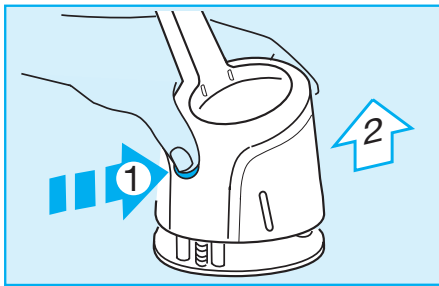
Contour Series



390 cc

Type 5735





中文

本产品设计优异、功能完善、质量可靠、满足高标准要求。希望您对新款吉列博朗剃须刀感到满意。

注意

本剃须刀配有集成化低压电源转换器。切勿更换或改装其中任何部件，否则有触电危险。

组件说明

- 1 网膜保护盖
- 2 网膜
- 3 刀头
- 4 网膜松解按钮
- 5 启动开关 (《start/stop》)
- 6 长须修剪器
- 7 充电指示灯 (绿色)
- 8 清洁指示灯 (黄色)
- 9 更换零件指示灯
- 10 复位按钮
- 11 专用电源线

充电

充电时最佳环境温度为 15°C 至 35°C。

- 首次充电：关闭剃须刀，用专用电源线将剃须刀接通电源，至少充电 4 小时；
- 绿色充电指示灯在充电时会不断闪烁。当电池充满电时，绿色指示灯持续显亮；
- 电池充满后不接电源线可使用 50 分钟，具体长度视胡须浓密程度而定；
- 当剃须刀完全充满电时即能不接电源剃须。正常使用时，剃须刀能在每次使用 Clean&Renew™ 清洁座清洁时自动充电（详情请见其独立说明书。）；
- 电池的最大容量需经过数次充电/放电循环后方能达到；

- Clean&Renew™ 清洁座充电所需时间：8 小时；
- 专用电源线充电所需时间：1 小时；
- 当充电电池电量耗尽时，可以直接用专用电源线接电剃须。

剃须

启动剃须刀 (《start》)：

轮廓贴合系统，自动顺应脸部轮廓。

长须修剪器

启动长须修剪器可修剪小胡子和鬓角。

完美剃须的秘诀

- 皮肤遇水会略微膨胀，所以建议洗脸前剃须；
- 剃须刀尽量与肌肤成 90° 直角，逆着胡须生长方向剃刮；
- 为保持最佳性能，请在更换零件提示灯 (9) 发亮 (约 18 个月后)，或零件发生磨损时更换网膜及刀头。

保持剃须刀最佳状态

清洁指示灯

剃须刀应该每日用 Clean&Renew™ 清洁座进行清洁，或者当黄色的清洁指示灯 (8) 在剃须后持续显亮时进行清洁。若一直没有用 Clean&Renew™ 清洁座进行清洁，黄灯会在一段时间后自动熄灭。清洁指示灯会假定剃须刀已进行自动清洁，并重新开始计算下次需要清洁的时间。

剃须刀清洗过程中，黄灯会闪烁，在大约 4 小时后清洁结束时熄灭。

自动清洁

每次剃须后将剃须刀置于 Clean&Renew™ 清洁座中，清洁/充电器会自动进行充电和清洗（参见其单独的说明）只有在无法使用 Clean&Renew™ 清洁座时（如旅游时），才建议进行手动清洁。

手动清洁



本机可以用自来水直接冲洗。

注意：用水清洗前应先手柄与电源分离。

每次剃须后立刻用清水冲洗，是保持剃须刀清洁的简便快捷方法：

- 启动剃须刀（脱/断线工作），用流动温水清洗刀头。也可以使用不含颗粒或研磨物质的天然香皂清洗。冲洗掉所有的泡沫并让剃须刀继续运转几秒钟；
- 关闭剃须刀，卸下网膜和刀头，将其晾干。

可以使用配置的小毛刷清洁剃须刀：

- 关闭剃须刀，卸下网膜；
- 使用毛刷清洁轮廓贴合刀头内部区域，但不要刷子清洁网膜，以免损坏。

更换零件指示灯/复位按钮

为保证完美的剃须效果，在更换零件指示灯（9）发亮（约在 18 个月后）或零件发生磨损时，应当更换网膜和刀头。

两部件宜同时更换，以使剃须更加顺贴，减少皮肤反应。

（网膜（2）和刀头（3）：31S）

更换零件提示灯将连续七次在启动剃须刀时提醒更换零件，然后自动恢复原显示。

更换网膜和刀头以后，用圆珠笔按压复位按钮（10）3 秒钟进行手动复位。

操作时更换提示灯会闪烁，并在复位完成后熄灭。手动复位可随时进行。

保存电池

为了保持充电电池的最佳容量，大约每六个月应当通过剃须完全放电一次，然后完全充满。本剃须刀不宜长时间置于超过 50 °C 的环境中。

Clean&Renew™ 清洁座

博朗 Clean&Renew™ 清洁座是专门为清洁、充电和放置剃须刀而设计的。每天都可以用博朗自动清洁/充电器来清洁剃须刀。

自动清洁过程中，剃须刀电源会间歇性地自动接通与切断，以达到最好的清洁效果。特制的清洁剂中含有少量机油，在清洁过程中会同时对剃须刀进行润滑。

注意

- 充电时请务必使用剃须刀自带的电源线；
- 为避免清洁剂漏洒，请务必将 Clean&Renew™ 清洁座放置于平整、稳定处。切勿倾斜，晃动或在安装清洁剂盒后运输；
- 请勿将博朗 Clean&Renew™ 清洁座放置于玻璃制成的密封小柜内、并且远离辐射物、请勿将其放置于光滑或油漆的表面，应避免阳光直射；
- 博朗 Clean&Renew™ 清洁座含有高度易燃液体。应远离火源。避免燃着的香烟。防止儿童搬弄。请勿自行填充清洁剂盒，应选用博朗原装清洁剂；
- 在清洁剃须刀时请将网膜保护盖卸下。



说明

- 1 清洁剂更换按钮
- 2 接头
- 3 开始/网膜松解按钮
- 4 清洁剂指示灯
- 5 清洁剂盒

使用 Clean&Renew™ 清洁座前的注意事项

安装清洁剂盒

- 按住清洁剂更换按钮（1）打开外罩；
- 取出清洁剂盒并放于水平稳定的平面上（如桌面）。小心打开清洁剂盒盖。将清洁剂盒推入最里面；
- 缓慢关上外罩并锁紧。

替换清洁剂

按下更换按钮打开外罩，稍等片刻后取出用过的清洁剂盒，避免滴洒。

用过的清洁剂已被污染，丢弃前务必用新清洁剂盒的盒子盖紧。清洁剂可随日常生活垃圾处理。

操作 Clean&Renew™ 清洁座

- 将 Clean&Renew™ 清洁座接通电源。剃须刀背部的专用电源插座可进行调节以节省空间。每次剃须后，关闭剃须电源，将剃须刀头朝下插入 Clean&Renew™ 清洁座。
- 按压开始/网膜松解按钮（3）来连接并锁定剃须刀。清洁过程随即开始。在整个过程中，剃须刀上的黄色指示灯会不断闪烁（约清洁 5 分钟，烘干 4 小时）。
- 请勿在清洁过程中终止操作，此时剃须刀上会有清洁剂且不适宜使用。如果必须中断，按压开始/网膜松解按钮（3）。
- 当清洁过程结束时，黄色指示灯会熄灭，剃须刀洁净待用。按压开始/网膜松解按钮松解剃须刀。
- 每盒清洁剂足够提供 30 次清洁。当清洁剂指示灯（4）达《min》最低标志线时，剩余的清洁剂尚能提供 5 次清洁。若每日使用，清洁剂盒应该每 4 个星期更换一次。
- 清洁剂中含有酒精，一旦开启即会缓慢挥发。如非每日使用，应当大约每 8 周更换一次。
- 应当经常用湿布清洁剃须刀清洁/充电器的外罩，尤其是插入剃须刀的部位。

本说明可能在不作事先通知的情况下作出修改。

环保提示

本产品内含充电电池。为了保护环境，请勿在达到使用寿命后与普通生活垃圾一起丢弃。请在国内专设的适当收集点处置，或交给博朗售后服务中心统一回收处置。



清洁剂盒可随日常生活垃圾处置。■

本说明可能在不作事先通知的情况下作出修改。

本产品符合欧洲 EMC 指令第 89/336/EEC 以及欧共体低压标准 2006/95/EC。



电气规格详见专用电源线标示。

保修

本产品保修期为购买之日起两年。保修期内凡因原材料或生产过程导致的各种瑕疵，本公司将视情况更换零件或整个产品。

本保修条款适用于所有博朗公司或其指定经销商销售本产品的国家。

上述保修承诺不适用于下述情形：

- 使用不当造成的产品损坏(包括但不限于使用错误的电流、电压,将产品插入不合适的插座及其他人为损坏)。
- 网膜和刀头磨损。
- 对正常使用影响不大的瑕疵。
- 非家庭使用(如工业、商业用)引起的损坏。

一旦由未获授权人员修理、或换用非博朗原装零配件，本保修立即终止。

保修期内提供的服务不影响保修期的终止。保修期中更换的零件或整机的保修服务，与本产品的保修期同时终止。

本保修不影响法律明文规定的权利。

如需保修或维修，请携带整机和购货发票，与当地或就近的维修站联系。

顾客免费热线：800-820-1357

最新Braun售后服务部地址

城市	公司名称	地址	联系电话	
中区				
200085	上海	安帮北站天路电器安装维修服务社	上海市永兴路540号(靠近西藏北路)	63566755/56329466
200235	上海	乐帮新尊办公设备维修服务社	上海市漕溪路190号(靠近田林东路)	64688241
201100	上海	上海市闵行区博洁电器维修部	上海市闵行区莘建东路210号(莘庄地铁站-北广场)	64122533
310016	杭州	杭州中侨家电维修服务有限公司	杭州市采荷路10号	86047438
266071	青岛	青岛市市南区超维影视通讯技术服务部	青岛市市南区银川西路3号政泰商务楼202室	85977910
361003	厦门	厦门市思明区新鹭声电子技术服务部	厦门后埭溪路248号之6、7、8号	5170118/5170633
210003	南京	南京博伊华电子电器经营部	南京市中山北路223号陆龙电子城128包间	83420092
315040	宁波	宁波市江东明楼甬城家电维修部	宁波市江东惊驾路506号	87771344
315000	宁波	宁波海曙创佳数码家电维修部	宁波市苗圃路39弄50号(海关对面)	87134422
250100	济南	济南三能通信设备有限公司	济南市解放路30号国华经典3号楼1单元1104	88388197
230001	合肥	合肥数码技术服务部	合肥市庐江路54号	2655887/2654456
450000	郑州	郑州晟辉商贸有限公司	郑州市兴隆街8号郑州大酒店B座2306室	66770865
北区				
100078	北京	北京盛侨家用电器维修服务中心	北京市丰台区方庄群芳园2区6号楼金芳公寓304室	67698025/67630617
100035	北京	北京盛侨家用电器维修服务中心	北京市西城区西直门内大街南草厂街甲11号楼318室(长城商务写字楼)	66561976
050021	石家庄	河北省家用电器维修中心	石家庄市槐北路70号	86011793
300022	天津	天津市家维服务中心	天津市和平区滨江道109号	27120170
110011	沈阳	沈阳市沈河区东业电器维修中心	沈阳市沈河区承德路36-1	24870309
150010	哈尔滨	哈尔滨市道里区信誉进口家电维修部	哈尔滨市道里区地段街190号	84644674
116021	大连	大连市沙河口区现代电子技术服务部	大连市沙河口区西南路791号-7-3	86841988
130042	长春	吉林省百文礼品文具有限公司	长春市南关区大经路370号	88741702
710014	西安	陕西百利商贸有限公司	西安市丰禾路6号丰禾小区22号楼2楼	86220211
南区				
510600	广州	广州市金永利电器有限公司	广州市寺右新马路南二街24号	87386165(6)
518028	深圳	深圳市顺电连锁股份有限公司	深圳市华强北上步工业区202栋2楼东	83286255
400014	重庆	重庆市渝中区中侨家用电器维修部	重庆市渝中区中山三路44号附2号	63527117
530001	南宁	南宁市南方家用电器维修中心	广西南宁市唐山路29号首层	3118895/3907787
650032	昆明	昆明松和电器有限公司	昆明市三合营路25号附2号	36455557
430015	武汉	武汉市江岸区兆利达家电维修中心	汉口解放大道1439号4栋3单元101室	85790611
610017	成都	成都市武侯区金维电子经营部	成都市大安东路57号3-6号	86944135
528200	佛山	佛山市禅城区得盛家电维修部	佛山市城门西商业街10号	83213535
350001	福州	福州福春电器维修服务有限公司	福州市塔头路328号顺意园一楼店面(福州锅炉厂对面)	87582122
325000	温州	温州市声像技术服务公司	温州市马鞍池东路45-47号	88850706

上海涵思贸易有限公司可办理零件及产品邮购
E-mail: shanghaihansi@163.com

电话: (021)64606449
邮编: 201100

注: 如果当地无特约维修站, 请与就近的维修站联系
顾客咨询热线: 800-820-1357 / 400-820-1357(手机用户)

BRAUN
德国博朗

博朗(上海)国际贸易有限公司
中国上海浦东三林路550号
邮编: 200124

上述维修站更新于2007年4月
如有变更, 恕不另行通知

English

Our products are designed to meet the highest standards of quality, functionality and design. We hope you enjoy your new Gillette Shaver.

Warning

Your shaver is provided with a special cord set with an integrated Safety Extra Low Voltage power supply. Do not exchange or manipulate any part of it. Otherwise there is risk of electric shock.

Description

- 1 Shaver foil protection cap
- 2 Shaver foil
- 3 Cutter block
- 4 Release button
- 5 On/off switch («start/stop»)
- 6 Long hair trimmer
- 7 Charging light (green)
- 8 Cleaning light (yellow)
- 9 Replacement light for shaving parts
- 10 Reset button
- 11 Special cord set

Charging

The best environmental temperature for charging is between 15 °C and 35 °C.

- **First charge:** Using the special cord set, connect the shaver to an electrical outlet with the motor switched off and charge the shaver for at least 4 hours.
- The green charging light blinks when the shaver is being charged. When the battery is fully charged, the charging light lights permanently.
- A full charge provides up to 50 minutes of cordless shaving time depending on your beard growth.
- Once the shaver is completely charged, shave without the cord. With normal use the shaver will be charged automatically after every cleaning in the Clean&Renew™ (see separate use instructions).
- Maximum battery capacity will only be

reached after several charging/discharging cycles.

- Re-charging time in the Clean&Renew™: 8 hours.
- Re-charging time with the special cord set: 1 hour.
- If the rechargeable batteries are discharged, you may also shave by connecting the shaver to an electrical outlet via the special cord set.

Shaving

Turn on the shaver («start»):
The pivoting cutting system automatically adjusts to every contour of your face.

Trimmer:

When the long hair trimmer is activated, it allows the controlled trimming of moustache or sideburns.

Tips for the perfect shave

- We recommend that you shave before washing, as the skin tends to be slightly swollen after washing.
- Hold the shaver at right angles (90°) to the skin. Stretch the skin and shave against the direction of beard growth.
- To maintain 100% shaving performance, replace the shaver foil and cutter block, when the replacement light (9) comes on (after about 18 months), or when the shaving parts are worn.

Keeping your shaver in top shape

Cleaning indicator

Your shaver should be cleaned daily in the Clean&Renew™, and certainly when the yellow cleaning light (8) shines constantly after shaving. If this is not done, the yellow light will go out after some time. The shaver's electronics will then assume it has been cleaned manually

and a new calculation of the time when the next cleaning is required will be started. During the cleaning process in the Clean&Renew™ the yellow light will flash and will go off after approx. 4 hours when cleaning is finished.

Automatic cleaning

Once the shaver is put into the Clean&Renew™, it is cleaned automatically (see separate instructions). Manual cleaning is recommended only when the Clean&Renew™ is not available, e.g. when travelling.

Manual cleaning



This appliance is suitable for cleaning under an open water tap.

Warning: Detach the hand-held part from the power supply before cleaning it in water.

Regular cleaning ensures better shaving performance. Rinsing the shaving head after each shave under running water is an easy and fast way to keep it clean:

- Switch the shaver on (cordless) and rinse the shaving head under hot running water. A natural based soap may also be used provided it contains no particles or abrasive substances. Rinse off all foam and let the shaver run for a few more seconds.
- Next, switch off the shaver, remove the shaver foil and the cutter block. Then leave the disassembled shaving parts to dry.

Alternatively, you may clean the shaver using the brush provided:

- Switch off the shaver. Remove the shaver foil.
- Using the brush, clean the cutter block and the inner area of the shaver head. However, do not clean the shaver foil with the brush as this may damage the foil.

Replacement light for shaving parts / Reset

To maintain 100% shaving performance, replace your foil and cutter block, when the replacement light for shaving parts (9) comes on (after about 18 months) or when worn.

Change both parts at the same time for a closer shave with less skin irritation. (Shaver foil (2) and cutter block (3): 31 S)

The replacement light will remind you during the next 7 shaves to replace the shaving parts. Then the shaver will automatically reset the display.

After you have replaced the shaving parts (foil and cutter block), use a ball-pen to push the reset button (10) for at least 3 seconds to reset the display manually.

While doing so, the replacement light blinks and goes off when the reset is complete. The manual reset can be done at any time.

Preserving the batteries

In order to maintain the optimum capacity of the rechargeable batteries, the shaver has to be fully discharged (by shaving) every 6 months approximately. Then recharge the shaver to full capacity. Do not expose the shaver to temperatures higher than 50 °C for extended periods of time.

Environmental notice

This product contains rechargeable batteries. In the interest of protecting the environment, please do not dispose of the product in the household waste at the end of its useful life. Disposal can take place at a Braun Service Centre or at appropriate collection points provided in your country.



Clean&Renew™

Braun Clean&Renew™ has been developed for cleaning, charging and storing your shaver. Clean your shaver daily in the Clean&Renew™.

During the automated cleaning process, the shaver is switched on and off at intervals to obtain best cleaning results. Since the specially formulated cleaning fluid contains a

small amount of oil, the cleaning procedure also fulfills the lubrication needs of the shaver.

Important

- Only use the power supply cord set supplied with the shaver.
- In order to avoid any leakage of the cleaning fluid, place the appliance on a flat, stable surface. Do not tip, move suddenly or transport in any way if a cleaning cartridge is installed.
- Do not place the appliance in a mirror cabinet, nor store it over radiators, nor place it on polished or laquered surfaces. Do not expose to direct sunlight.
- The appliance contains highly flammable liquid. Keep it away from sources of ignition. No smoking. Keep out of reach of children. Do not refill cartridge. Use only original Braun refill cartridge.
- When cleaning the shaver, its protection cap should be removed.



Description

- 1 Lift button for cartridge exchange
- 2 Contact bow
- 3 Start/release button
- 4 Level indicator
- 5 Cleaning cartridge

Before using Clean&Renew™

Installing the cartridge

- Press the lift button (1) to open the housing.
- Hold the cartridge down on a flat, stable surface (e.g. table). Carefully remove the lid from the cartridge. Slide the cartridge into the base as far as it will go. Slowly close the housing by pushing it down until it locks.

Replacing the cartridge


After having pressed the lift button to open the housing, wait for a few seconds before removing the used cartridge.

Before discarding the used cartridge, make sure to close the openings using the lid of the new cartridge, since the used cartridge will contain contaminated cleaning solution. The used cartridge can be disposed in the household waste.


Operating your Clean&Renew™

- Connect your Clean&Renew™ with the cord set to the mains electricity supply. The special socket at the back is adjustable to save space. After each shave, switch the shaver off and put it into the Clean&Renew™, upside down and with the front showing.
- Push the start/release button (3) to lock and connect the shaver. The cleaning process will start. The yellow light on the shaver will flash during the complete process (approx. 5 minutes cleaning, 4 hours drying).
- Do not interrupt the cleaning process, as it leaves the shaver wet and not fit for use. If interruption is needed nonetheless, press the start/release button (3).
- When cleaning is finished, the yellow light will go off and the shaver is ready for use. To release it, push the start/release button.
- A cleaning cartridge should be sufficient for about 30 cleaning cycles. When the level indicator (4) has reached the «min» mark, the remaining fluid in the cartridge is sufficient for about 5 more cleaning cycles. Then the cartridge should be replaced, when used daily approx. every 4 weeks.
- The hygienic cleaning solution cartridge contains alcohol which, once opened, will naturally evaporate slowly into the surrounding air. Each cartridge, if not used daily should be replaced after approx. 8 weeks.
- Clean the housing from time to time with a damp cloth, especially the opening where the shaver rests.

Subject to change without notice.

This product conforms to the European Directives EMC 89/336/EEC and Low Voltage 2006/95/EC. 

For electric specifications, see printing on the special cord set.

Please do not dispose of the product in the household waste at the end of its useful life. Disposal can take place at a Braun Service Centre or at appropriate collection points provided in your country. 



博朗咨询电话

免费顾客咨询热线: **800-820-1357**

手机用户免费咨询热线: **400-820-1357**

(以上咨询电话仅限中国大陆地区使用)

Internet

www.braun.com/register

Braun GmbH
Frankfurter Straße 145
61476 Kronberg/Germany

5-735-453/00/IV-07
China/GB